



1Thessalonians 5:13-15

Rise and Shine

13 and that you esteem them very highly in love because of their work. Live in peace with one another. 14 We urge you, brethren, admonish the unruly, encourage the fainthearted, help the weak, be patient with everyone. 15 See that no one repays another with evil for evil, but always seek after that which is good for one another and for all people.

Plymouth Lutheran Church

Pastor Ryan Kandoll

December 2023

11015 County Road 15, Plymouth, MN 55441 Telephones: 763-544-7248 & 763-544-9170

From the Pastor's Office

Are we there yet?

2020 brought many disrupting changes into all of our lives and for almost 2 years I heard many people wondering when things would go back to normal. I didn't hear that as often in 2023 but are we really there yet, when the love of many has grown cold? Things are still quite different from what they were in 2019. Is it normal?

The truth is, things have not been normal since Adam and Eve were in the Garden of Eden. There they were naked and unashamed. They had an awesome relationship with each other and with God. Then sin entered in and nothing has been the same since.

God so loved the world that He gave His one and only son so that whoever believes in Him will have everlasting life. God did not send His son into the world to condemn the world but to save it. Christ died for the sins of the

whole world and He is coming again one day to give us everlasting life and to finally make everything the way God intended.

Our focus all year, every year, everyday should be filled with wonder at Christ's coming to earth to die for our sins and filled with expectation of His return to finally make everything normal like none of us have ever known. An eager expectation, like a small child on a car ride, not knowing how long it will take, wondering, "are we there yet?" No, not yet, but soon.

I know this time or anytime can be lonely for some. If you or someone you know, could use a pastoral visit, please reach out to me! It doesn't have to be awkward; you could just invite me to coffee or to come pray with you.

I love you!
God's peace!
Pastor Ryan

Church website: www.plymouthapostolic.org

Church email: secretary@plymouthapostolic.org

Prayer Chain: plcprayerchain2021@gmail.com

If you would like to receive this by email, please send a message to secretary@plymouthapostolic.org

December at PLC

December							2023
Sun	Mon	Tue	Wed	Thu	Fri	Sat	
					1	2	
3	4	5	6	7	8	9	
10	11	12	13	14	15	16	
17	18	19	20	21	22	23	
24	25	26	27	28	29	30	
31							

Sundays:

- 3, 10, 17** **9:15am** Sunday School & Adult Bible Study
10:30am Worship service
11:30am Coffee Fellowship
- 17** **10:30am** Worship service -Communion
 Children's Christmas Program
- 24** **3:00pm** Candlelight Service
- 31** **10:30am** Worship Service

Mondays:

- 25** **10:30am** Christmas Day Service

Tuesdays:

- 12** **6:00pm** Mission Committee meeting
6:30pm Board of Trustees meeting

Wednesdays:

- 6** **9:00am** Men's Breakfast @ Perkins
 HWY 55 & 494
9:30am Women's Bible Study at the church
6:00pm Evening Bible Study
- 13** **9:30am** Men's and Women's Bible Study at the church
6:00pm Evening Bible Study
- 20** **6:30pm** Caroling at Northridge
- 27** **6:00pm** Evening Bible Study

Fridays:

- 15** **6:30pm** Movie Night

Celebrate Our Congregation

December Birthdays:

Larry	Johnson	12/9
Caroline	Clause	12/11
Joel	Hendrickson	12/13
Joyce	Tibbs	12/14
Scott	Maikkula	12/16
Evy	Walters	12/17
Noel	Walters	12/20
Patti	Olson	12/25
Max	Wempen	12/27

December Anniversaries:

Roger & Myrt	12/7
Peter & Asal	12/10

Save The Date

Movie Night is Back at PLC

Join us Friday, December 15th @ 6:30pm
 Movie is "Like Arrows"

***Join us for ***

A Sunday School Christmas Program –
 "The Birth of Jesus"
 Sunday, December 17th
 at the beginning of the church service

Feed My Starving Children event
 scheduled for

Saturday, January 20th @
 9:00am

Sign-up sheet coming
 soon.



NOTICE OF TIME CHANGE

CHRISTMAS EVE SERVICE WILL BE AT 3:00pm

**There will NOT BE a 10:30am service on
 Christmas Eve.**

**There will be a 10:30am service on
 Christmas Day.**

Nicole Bartell Update:

Happy fall! I can't believe how fast these last few months have gone by! Firstly, I want to say thank you for your support, because Saul and I were able to go on our honeymoon trip at the beginning of September! It was such a blessing and we are so thankful.





Since then we have been very busy with the ministry we are currently serving in, which is the kitchen. We have been in this role since April of this year, so by now we are well acquainted with making schedules, menus and shopping lists, chopping veggies, washing dishes and going on Costco trips. For myself I can say I have grown so much in my leadership, staying calm under pressure, and learning to ask for help. Jesus has definitely carried me, trained me and humbled me.



We also get the opportunity to work in other ministries on base! Saul had the chance to host a build team that he has had the privilege of working with before, and got to bless a family with a new home! I have recently been able to take on the new challenge- I became a coach at our gym on base! A few times a week I get to lead others in exercise classes. This has been a joy and an honor for me.



Just this month we have started training some of the people that will be taking our place in the kitchen, as we will be transitioning to being staff of our Discipleship Training School that begins in January! We are excited to get to know and disciple a new group of students- more info on that later.

As far as our current needs, we have lost a bit of financial support in recent months, and with inflation and changing exchange rates, that loss

has really affected us. We are so grateful for all the support we currently have, but we are looking for more monthly supporters! Support in any form (one-time donations, monthly support, prayer, friendship) is so valuable to us. If you feel moved to donate, here are a few ways:

Venmo: @nikgwen

Tax-deductible

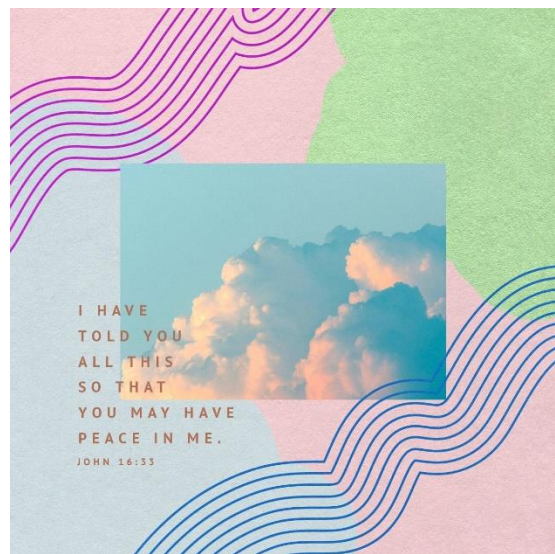
online: <https://ywamsdb.givingfuel.com/staffsupport>

Zelle: contact me for details :)

Check by mail to: Nicole Bartell YWAM SDB, 1101 Bay Blvd, Suite C, Chula Vista, CA, 91911

Thank you for all your love and support! We are living the dream all because of you!

Con mucho amor,
Nicole & Saul





THE BUZZ

November 20

FROM THE FIVEHIVE

Approach

Prior to an airplane leaving the gate of an airport, there are a lot of logistics that need to be in place: the plane must be fueled up, safety & maintenance checks need to be completed, cargo needs to be loaded, and of course the passengers need to board. Part of boarding passengers is making sure the finances are in place. Derek knows this too well: on one of our past return flights to Papua New Guinea (PNG), he was prevented from boarding at the gate because the airline required payment for an extra piece of luggage.



https://commons.wikimedia.org/wiki/File:PAL_Airbus_300-200_Bacolod.jpg

In this newsletter, we'll update you on the progress of our home assignment goals that are very similar to the logistics of getting a plane off the ground.

But first...

Our primary role in PNG is to support Bible translation by providing education and medical services. Both of us LOVE OUR JOBS, despite its challenges, and are excited to get back to it. We also make time to serve Bible translation in a *different* way; we are what's called the "Support Team" for a specific Bible translator, Katri Linnasalo (who is from Finland). Being a Support Team involves staying in touch with Katri while she is in the village; we're like Katri's direct connect help line back in Ukarumpa. If she needs any specific support for IT, aviation, or logistic issues, she can call us, and we'd be her "boots on the ground". We also pray for her and plan & gather food for her right before she arrives back in Ukarumpa.



This is Katri on the front porch of her village home.

On a specific village trip last year, Katri had trouble with her solar panel and recharging system. This meant she had no electricity to charge her computer, which holds all of her translation work. Katri and Kristy communicated with short urgent emails and texts (before her battery completely died). Kristy then helped facilitate communication between Katri and the IT department, who was then able to guide Katri to fixing the issue.



This is Katri working with her village translation team in a typical Ukarumpa translation office. Most of the time, Katri works in the village, but there are occasions when she will fly her team to Ukarumpa for more focused translation & teaching.

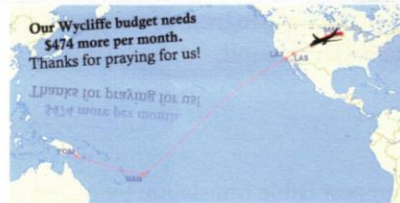
Updates on our goals

1. Guiding & settling Grant and Nate into their next phase of life: Grant and Nate are doing really well in college. Grant's Calculus 3 course is going super smooth, thanks to the curriculum at Ukarumpa International School (UIS). Nate has successfully (and joyfully) completed his first term of outdoor classes and adventures in the Canadian Rockies!
2. Getting recharged to return to PNG in January: This has happened but not in the way we intended it (isn't that the story of the Christian life!): Derek got really sick with labyrinthitis early in

PAGE 1

September, which put him out of commission for a couple weeks. (forced rest!) Praise the Lord, his balance is back to about 97%.

3. Reconnecting with family & friends while sharing the amazing things God is doing in Bible translation: Over the last month we've both traveled to and hosted friends: We traveled to Indiana to see dear friends and Kristy's college roommate. We also hosted other friends for a weekend at our home. We've also been invited to many coffee and lunch dates over the last month. All of these have been mutually encouraging and incredibly refreshing.
4. Raising the funds so that our Wycliffe ministry monthly budget is fully funded: We spoke at our home church in mid-October and had a new pledge of \$10 per month. That same week, a current partner notified us that they were increasing their gift by \$66 per month. Once we have commitments that the budget is fully funded, we'll be released to return and continue to care for the educational and medical needs of Bible translators, as well as be the Support Team for Katri.



This infographic shows the route of our return itinerary (Las Vegas, LA, Fiji, PNG). In future messages, we'll be using the flight path as a budget progress bar.

Returning

With the goal being so close and our travel agent finding a great deal, we have in faith purchased return plane tickets to PNG. We are scheduled to leave Minneapolis on January 1st.

You've all been so supportive of us in so many ways. Thank you very much!

Unswervingly,

Derek Kristy Trent

Hebrews 10:23

CONTACT INFORMATION

Mailing address

1923 Co Rd 7
Mahtowa MN 55707

Our email addresses and phone numbers

derek_johnson@wycliffe.org (605) 277-6798
kristy_johnson@wycliffe.org (605) 377-3788

Give us a call if you'd like to catch up and chat (even if it's with a video call). We'd love to hear from you!

To read our blog, go to <https://thefivehivesbeeswax.wordpress.com>

Prayer requests

- ▶ Please pray for God's plan to be revealed in our Home Assignment goals.
- ▶ We've had a number of issues related to broken vehicles, home, etc. Please pray for us to remain focused on knowing Christ deeper rather than the issues of this decaying world.
- ▶ REPEAT from last time: Please continue to pray for Grant and Nate; pray that they will be intentional about fostering a life of dependence on the Holy Spirit's guidance while living away from Mom & Dad.

Praises

- ▶ We asked for prayer for Trent's transition back to school: this transition has been tremendous due to an incredible group of friends that he made during our home assignment.
- ▶ Trent's teeth continue to improve and get aligned with his braces. We praise God for the medical technology.
- ▶ We're so thankful that Derek is almost 100% recovered. The balance issues that remain manifest themselves only when he is being athletic or overly tired.

Wycliffe

Wycliffe Bible Translators
P.O. Box 628200
Orlando, FL 32862-8200

1-800-WYCLIFFE
(1-800-992-5433)
www.wycliffe.org

Derek & Kristy Johnson
<https://www.wycliffe.org/partner/thefivehivesbeeswax>
Wycliffe ministry number: 249455